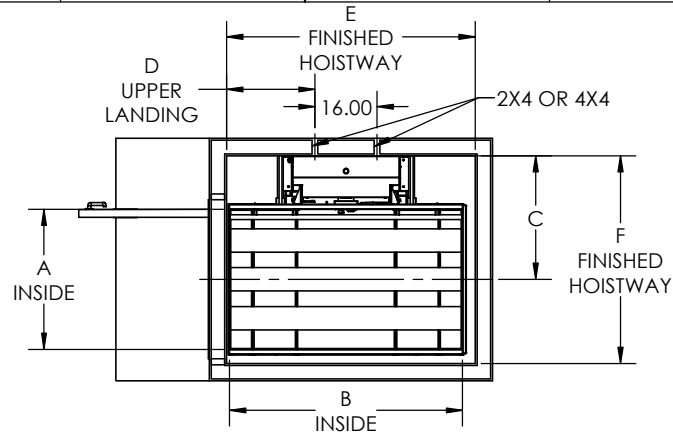
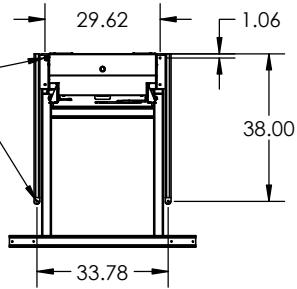


ANCHOR LOCATIONS - 4 PLACES



Specifications
 Model: VP19
 Rated Load: 750 lbs
 Drive: Dual winding cable drums / 24 VDC
 500 watt motor w/brake
 Supply Power: 120 VAC 15A
 Operating Power: 24 VDC (DUAL 12V 10AH BATTERIES)
 Control Power: 5 VDC
 Platform: 36" x 48" (36" x 54")(36" x 60")(42" x 60")
 Lift Height: 1" - 144"
 Speed: 15-18 fpm
 Controls: Constant pressure
 Safety Standards: ASME A18.1, Section 2
 CSA B44.1/ASME A17.5
 Safety Features: Safety pan, final limit, slack cable brake, emergency stop w/alarm

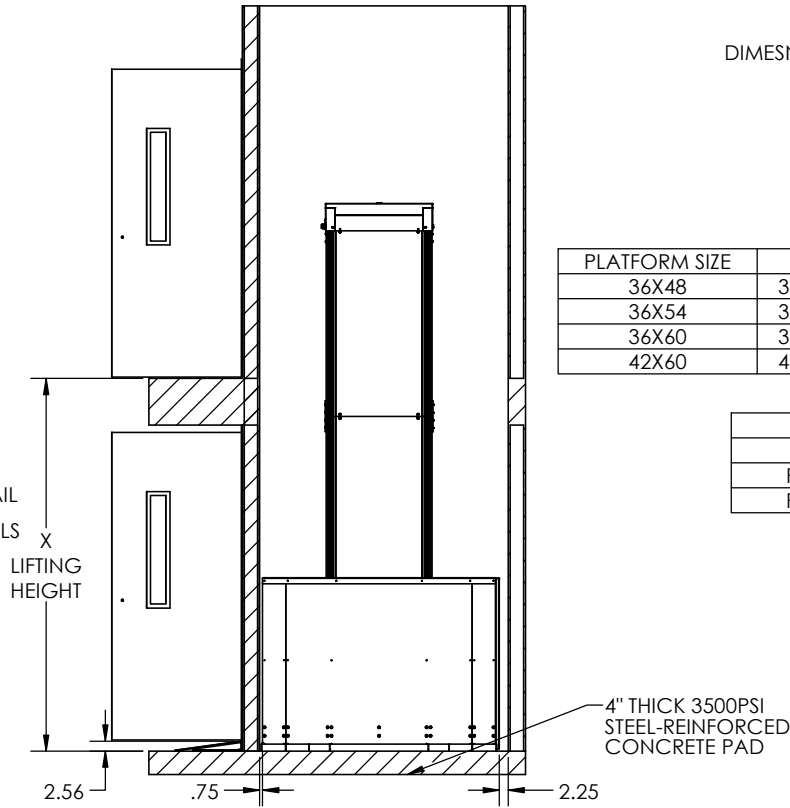
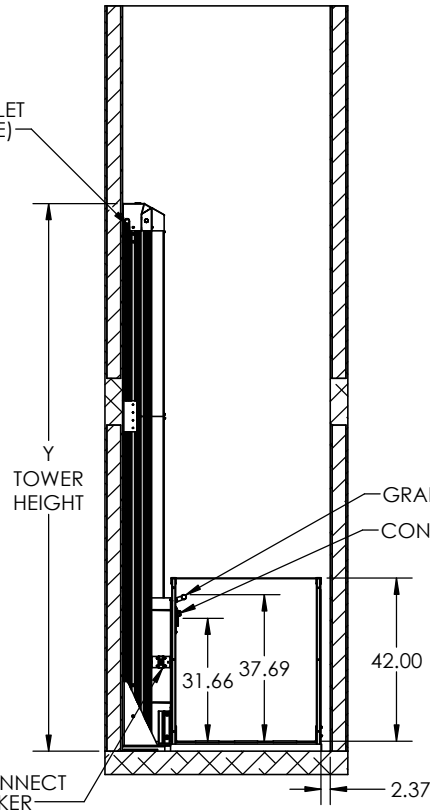
DIMENSIONS AND SPECIFICATIONS SUBJECT TO CHANGE

DESIGNED TO COMPLY WITH ANSI A18.1 PART 2 WHEN PROPERLY INSTALLED

PLATFORM SIZE	A	B	C	D	E	F
36X48	36.25	48.00	31.81	16.75	52.00	53.50
36X54	36.25	54.00	31.81	16.75	58.00	53.50
36X60	36.25	60.00	31.81	22.75	64.00	53.50
42X60	42.25	60.00	34.81	22.75	64.00	59.50

MODEL	X	Y
PLH-096	96	141.06
PLH-0120	120	165.06
PLH-0144	144	189.06

120VAC INLET (EITHER SIDE)



CREST VPL

TITLE:
PLATFORM LIFT - HOISTWAY

SIZE DWG. NO. REV
B TYP-PLH-EE

01/24/2019 SCALE: WEIGHT: SHEET 1 OF 1