

Ahead of the curve with the new **Infinity Stair Lift**



AmeriGlide
ACCESSIBILITY SOLUTIONS



“

My Infinity stair lift has made my life so much easier, I can now keep active in my own home again.

”

The Infinity

For fully independent living

Become independent in your home

Your stairs should never be your biggest obstacle while aging in place. Negotiating the stairs shouldn't stop you from doing the things you want to do.

By choosing the Infinity curved stair lift, you can continue enjoying your entire home without worry.

Give peace of mind to yourself and others by installing an Infinity in your home.

With minimum assistance from others and its made-to-measure rail, the Infinity stair lift will keep you in good hands.



A Rail Designed Around Your Home

The Infinity rail is specifically designed to fit your staircase, no matter the shape.

The durable powder coated rail gives stability and ensures a smooth ride around each corner giving the best ride possible.



The Perfect Fit for Any Home

Every part of the Infinity curved stair lift has been designed with you in mind.



Features and Benefits

1 Hygienic Seat Covers

The Infinity has removable covers for a deeper clean and help keep the stair lift looking great — for years to come.

2 Simple to Control

The ergonomically designed control switch gives the user complete comfort for users with dexterity issues.

3 Easy Swivel Lever Controls

Tilting the lever makes it easy and safe getting on and off the stair lift when it reaches the top of the stairs.

4 Stop Motion

The Infinity will come to a halt if the sensors in the footrest discover an obstacle on the stairs.

5 Slim and Stylish

Without compromising comfort, the Infinity is one of the slimmest stair lift seats, folding closer to the wall.

6 Folding Arms and Footrest

Easy to fold away giving room to other staircase users.



7 Seatbelt

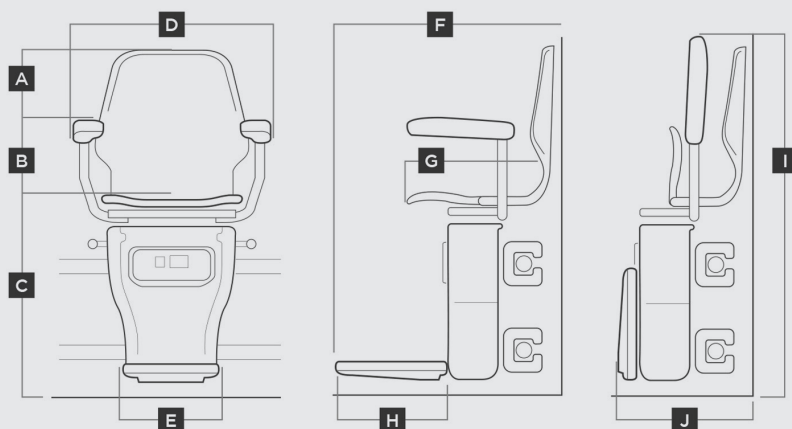
The retractable seatbelt ensures the user can feel safe and secure when operating the Infinity.

8 Footrest Lever

The lever puts the footrest down with minimal bending and discomfort to the user.

Specifications

	mm	inch
A Overall Height (from floor)	1058	42
B Height of arms (from floor)	837	33
C Height of seat (from floor)	594	23
D Overall width	607	24
E Width of footrest	300	12
F Overall depth (from wall)	620	25
G Depth of seat (to backrest)	385	15
H Depth of footrest	270	11
I Overall Height (when folded)	1078	43
J Overall depth (when folded)	407	16



Infinity Standard Features

The Infinity curved stair lift include the following as standard.



Retractable Seatbelt

Just like a car seatbelt, easy to adjust and use, giving the user the best comfort and safety possible whilst operating the stair lift.



Locking Keys

Two keys are included for locking the stair lift in an off position for added safety, preventing unwanted operation.



Remote Controlled

Two remote controls are supplied giving simple and convenient operation. The stair lift to be called or sent up the staircase when it's not being used.



Comfort and Control

The soft start/stop function is enhanced by the complete comfort of the padded seat, backrest and ergonomic controls.



Parking Couldn't be Easier

The seat and footrest are easily folded up giving you more space when the Infinity isn't being used.

With a powered swivel option available, this makes the Infinity stair lift even more practical and convenient to have in your home.

Optional Features

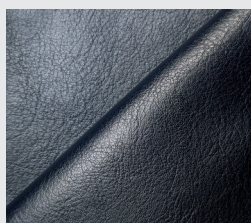
The following options are available to further customize your stair lift and make your life even easier in your home.



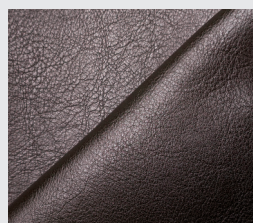
Powered Swivel

Making life easier for the user to turn the seat easily with the touch of a button. Ideal for users with dexterity issues.

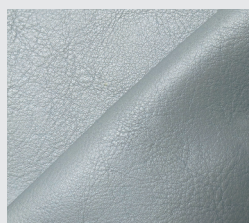
Vinyl Seat Color Options



Blue



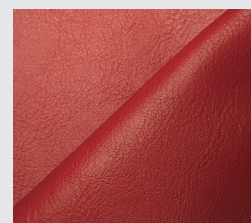
Brown



Grey



Original



Red



Why Choose the Infinity Curved Stair Lift:

- One of the slimmest rails
- Smooth start/stop motion
- Easy to operate for dexterity
- Left and right-hand options
- Swivel seat
- Easy on and off operation
- Fold away design
- Attractive and slim
- Key lock for safety
- Remote control function
- Easy to clean and maintain
- Removable seat covers
- Alternative colors available
- Outdoor option available
- Power options available
- Rechargeable power